

Care Sheet

Phidippus Regius

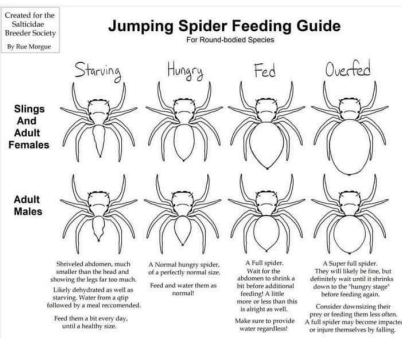
Feeding

Instar 5/6 should be fed on fruit flies 'Drosophila Hydei' as they grow larger house fly and greenbottles are your next step.

Older jumpers will appreciate the occasional waxworm/moth/blue bottle or even small locust.

I do not advise feeding crickets or mealworms as they can harm & harbour bad bacteria which isn't good for your spood.

Always check the abdomen size before feeding as over feeding can lead to issues, see the guide below which will help you assess if your spider needs food until you are able to visually tell yourself.



When it comes to drinking, jumpers enclosures should be lightly misted at least once daily, fine mist to ensure no large droplets which can be deadly to them, their anatomy places their book lungs under their abdomens, so be cautious.

Your spider will drink the fine droplet from either the walls of their enclosure or off of decor

Set ups

A starter cup with a breathable dome lid and cross ventilation is ideal when your spider finally arrives home with you, due to their size it is easier to keep tabs on them and for them to hunt easier, of course if you wish to place them straight into their forever homes just be watchful that they are eating and that its suitable with no means of escape.

Enclosure wise it's better to have a front opening home as they are arboreal and we don't want to disturb their web for moulting.

In regards to the size of enclosure, once they are older they can be moved to their forever home (20x20x30 is personally the max size I would home my jumper in) Acrylic enclosures on the market, or you can purchase Starter Cups or Custom Enclosures from our website. www.kellysfuzzyjumpers.co.uk

Lighting

Bright Led lights are perfect for jumpers! It helps them hunt, regulate their day and make them much more active. A typical 12 hour day 12 hour night is best to mimic their natural habitat

A LED lamp or strip lighting is ideal. Both are widely available online and at our website,

Temperature

Generally, if you are comfortable, they are comfortable. If you live somewhere that gets extremely cold, you may need to use a heat mat or lamp during parts of the year. Be careful not to cook your spider. **Never place a heat mat directly under the enclosure or a lamp directly next to the enclosure. Do not place the enclosure in direct sunlight, as it will quickly overheat.**

Handling

Interacting with your jumper is one of the joys of having them as a pet. Once you are both comfortable with each other, they will climb on your hands and arms like you are a giant playground. Since jumpers are small and fragile, it is best to handle them over a large, flat surface, such as the floor or kitchen table, with a paintbrush nearby. The paintbrush is a gentle way for you to encourage your spider to go in a specific direction without the risk of injuring it. A small catch cup, like the deli cup your spider came packaged in, can also be helpful if your spider is feeling extra mobile that day. Sitting low on softer surfaces like carpets or beds can prevent injuries if the spider falls. As jumpers move around using a nearly invisible strand of silk, it is crucial to move your hands slowly to prevent accidentally breaking their safety line and causing harm. While jumpers are not known for biting, it is a rare possibility. Bites usually only happen because they were being squished or cornered. Try not to pick them up by grabbing them. Instead, allow the spider to climb onto you. If your jumper happens to escape, stay near the area where you lost them, seal off crawl spaces and vents, and keep pets out of the room until you find them. Jumpers tend to climb upwards, so you might find them exploring the walls nearby.

Aging/Molting:

As your spider grows, it will shed its exoskeleton in a process called molting. Each time between molts is called an "instar". When the spider first hatches, it is considered instar 1 (also called i1). Each successive molt increases the instar number (i2, i3, i4, etc.) until maturity. Responsible breeders should never sell a sling before it reaches i4. Maturity typically happens between instar 8-12. Each jumper will molt at their own pace, with younger spiders molting more frequently and quickly than older ones. During the molting process, spiders may not eat, and it can take anywhere from a few hours to a month for the spider to complete their molt. To allow their fangs and exoskeleton to harden, many keepers refrain from feeding spiders for a couple of days after molting.

This care sheet has been put together to help to educate you on your jumping spider journey, information is based on other breeders inputs & or personal experience. More information can be found online, in groups and of course by emailing me with any questions.

Good Luck With your upcoming journey and i'm sure you'll fall in love with jumpers as much as I have.



www.kellysfuzzyjumpers.co.uk

